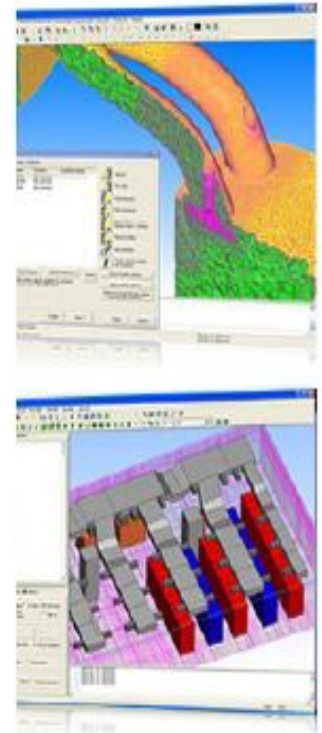
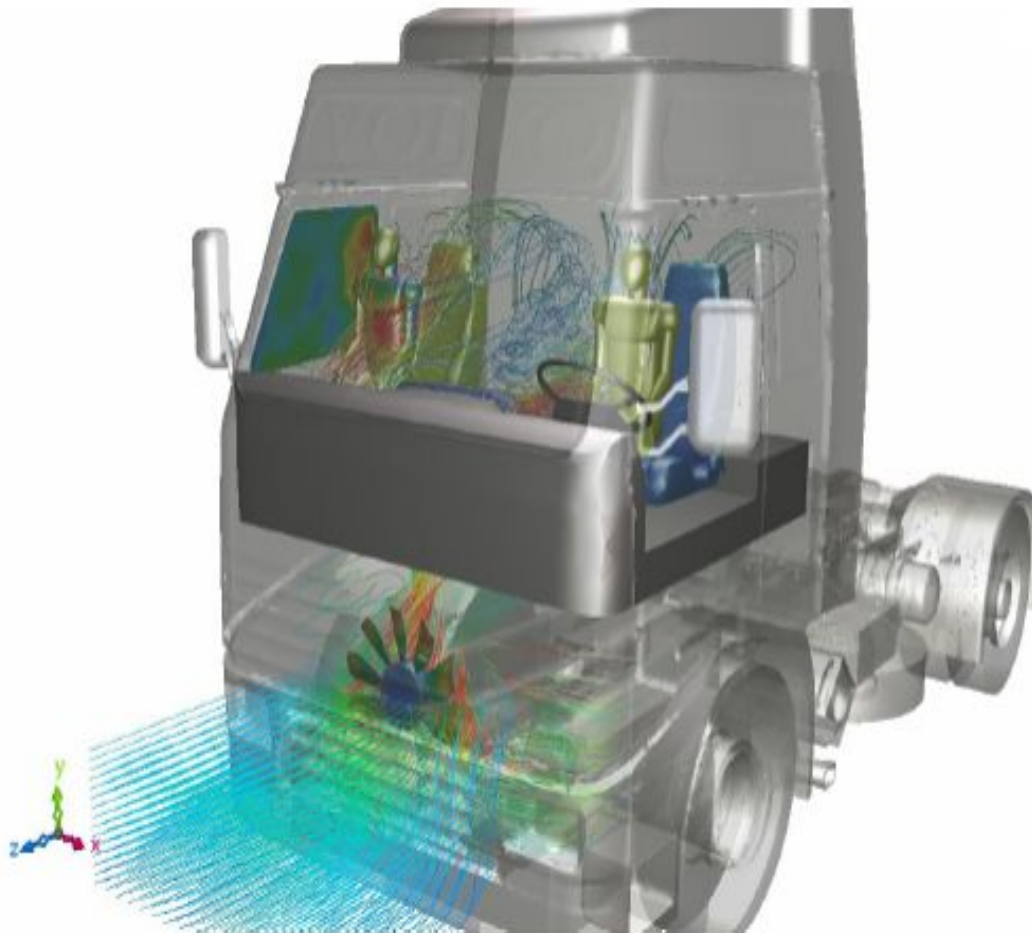




# HVAC

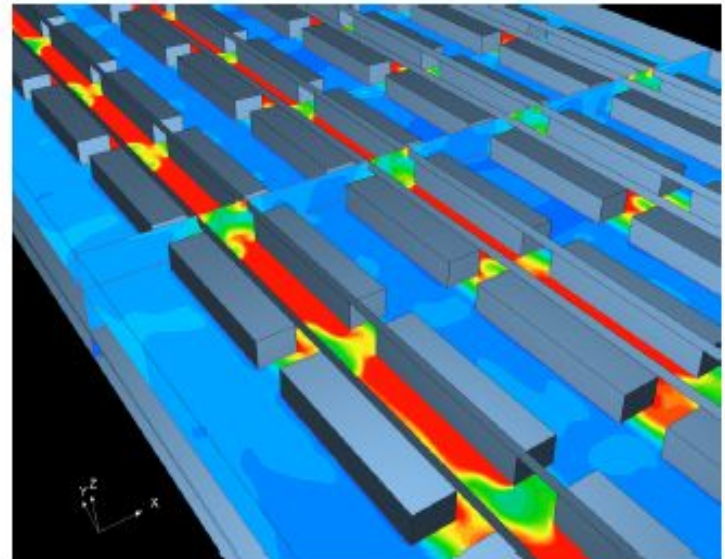
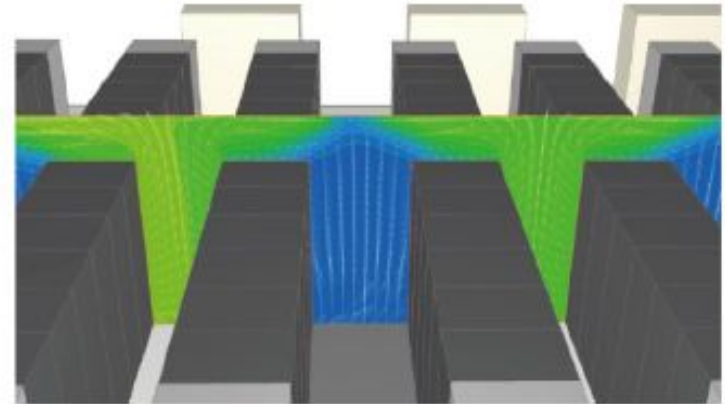
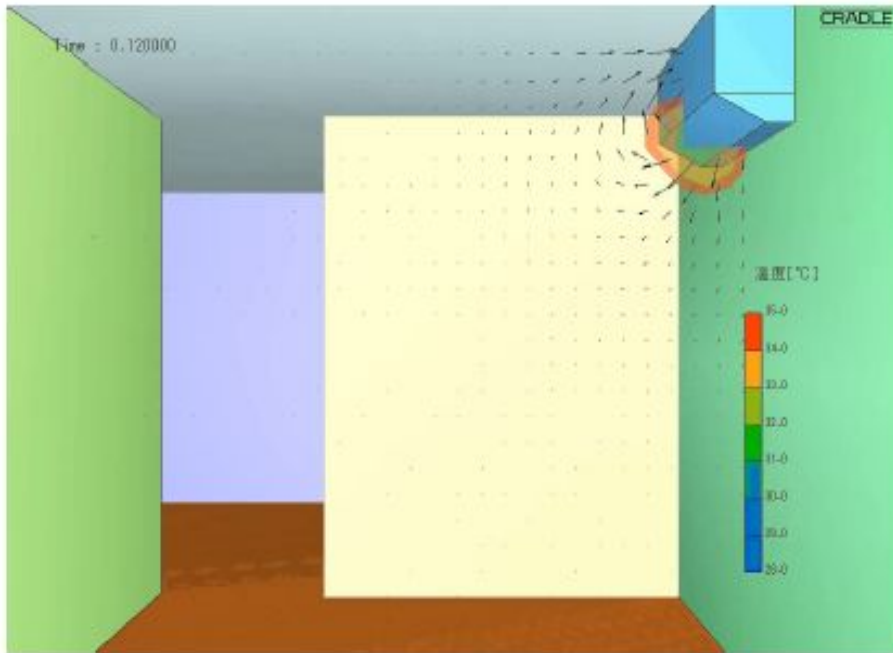
---



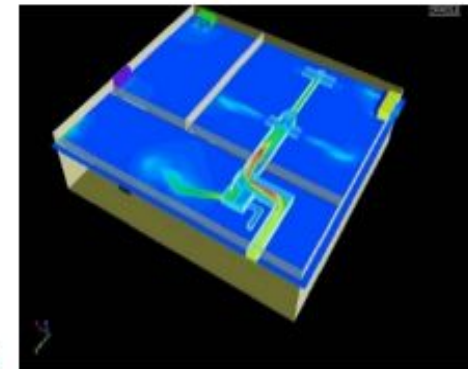
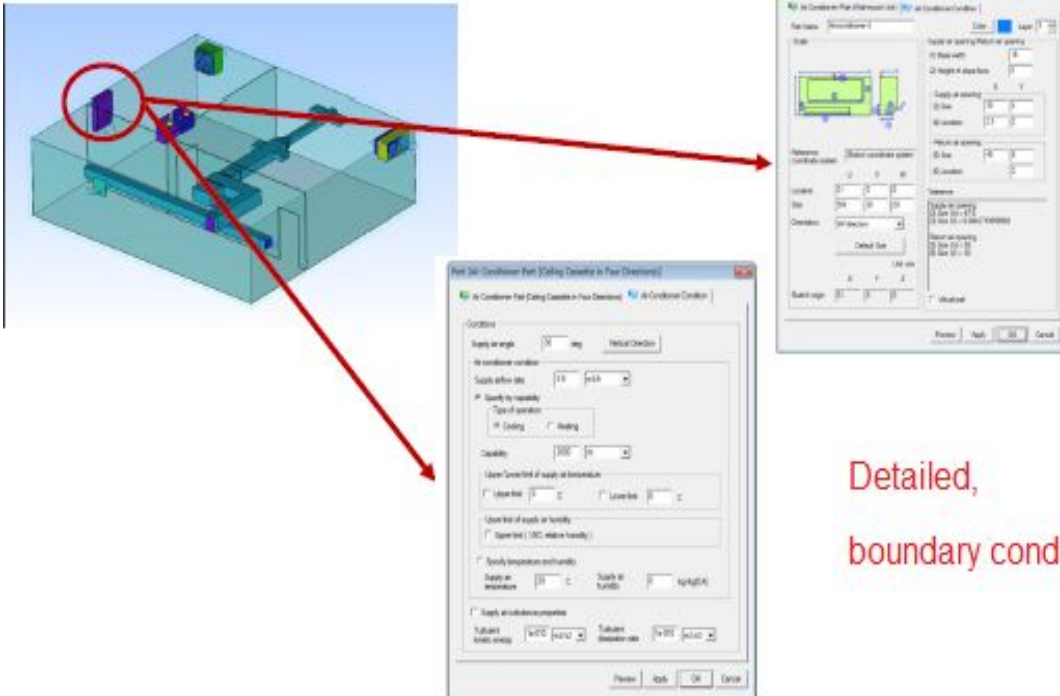
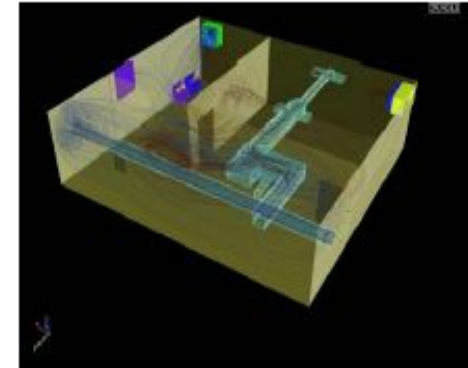
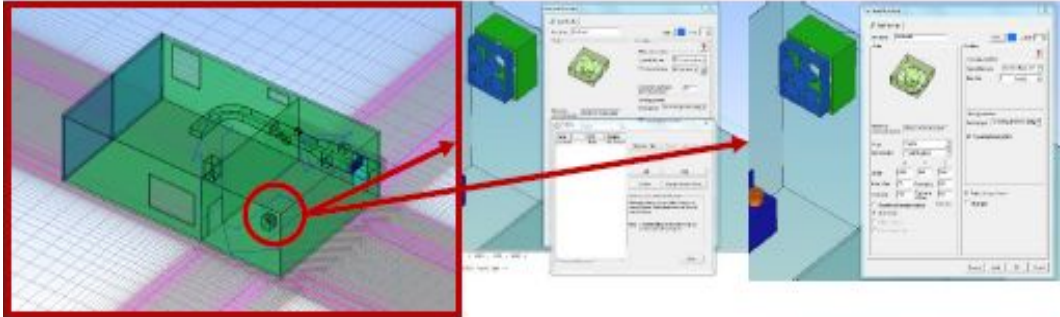


# CLIMATE ANALYSIS

In terms of comfort, to create suitable conditions, humidity, temperature, flow etc. Analyzes, in detail and on actual scale.

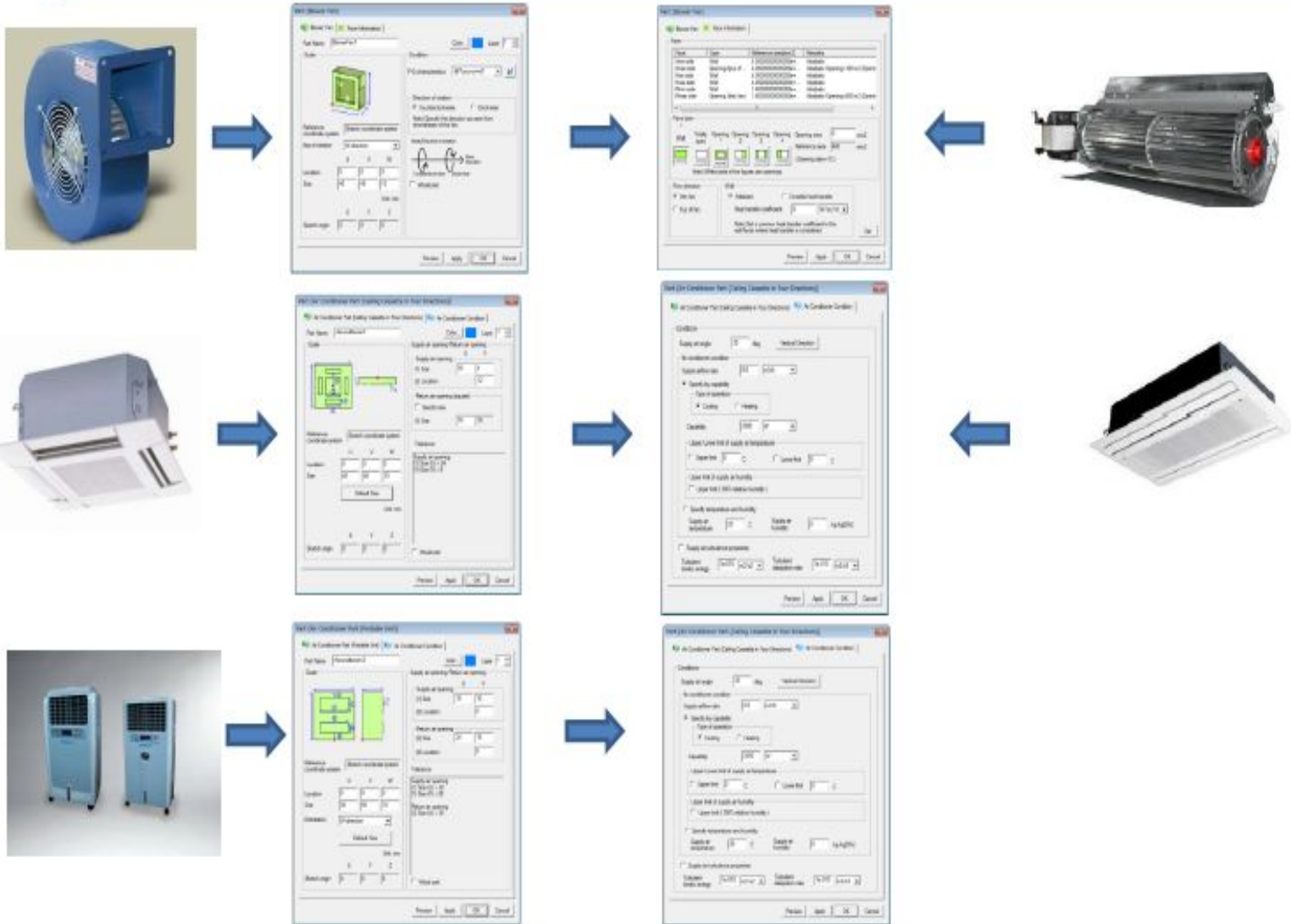


# Air conditioning and ventilation

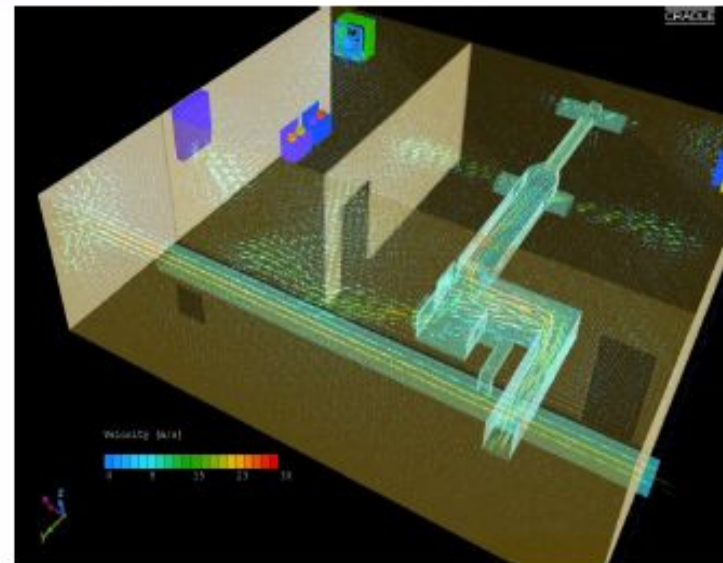
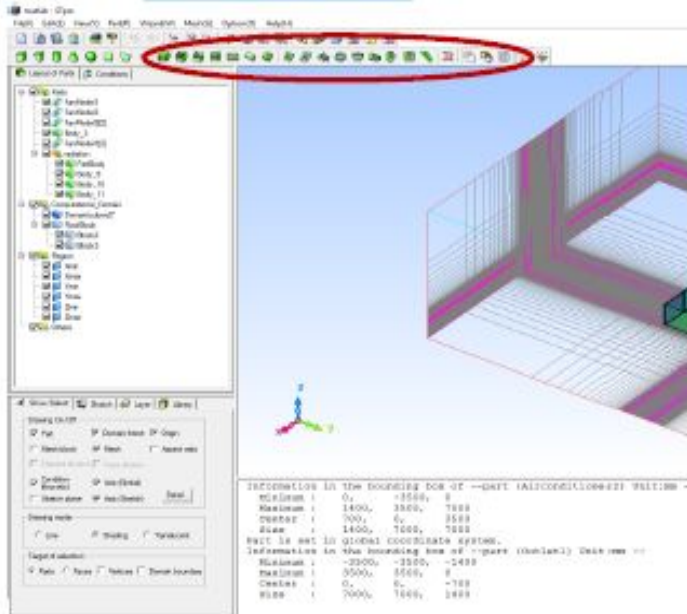


Detailed,  
boundary conditions

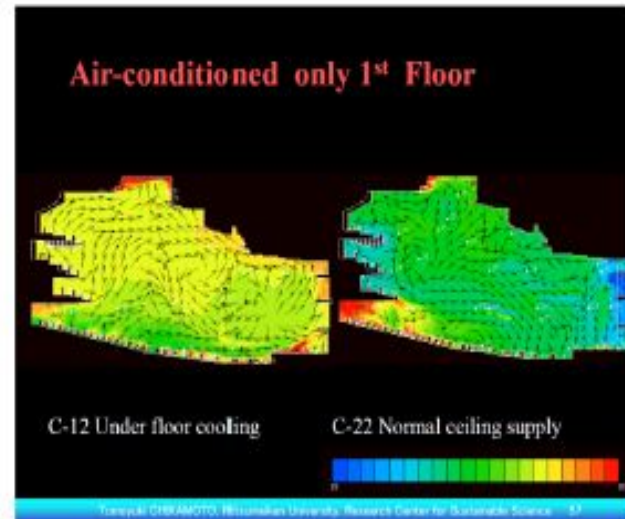
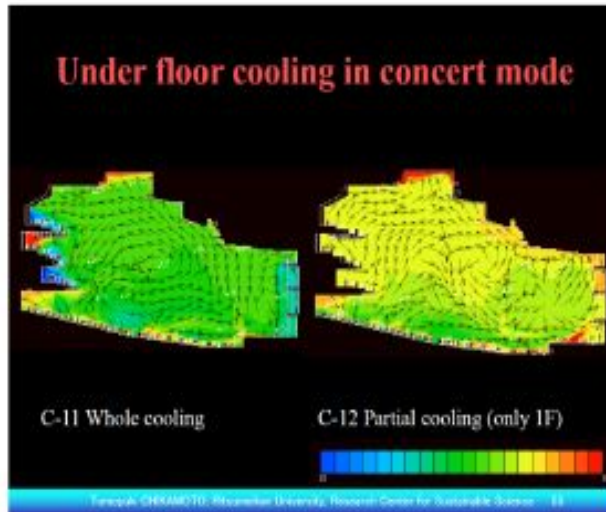
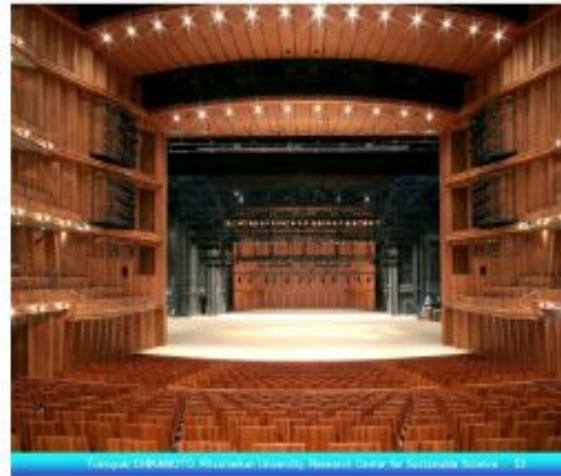
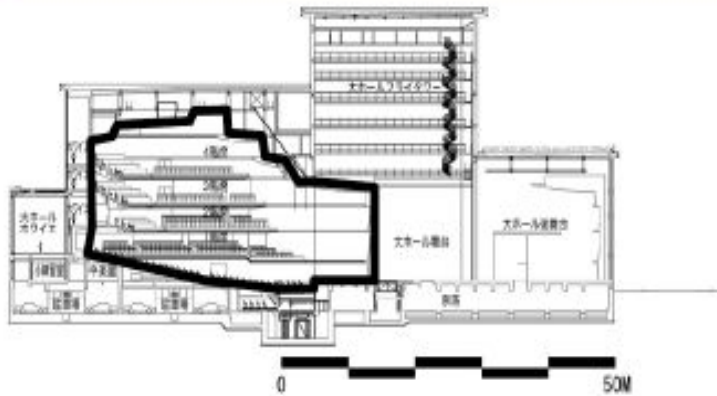
# Air conditioning and ventilation



# Air conditioning and ventilation



# Air Conditioning Ventilation Analysis

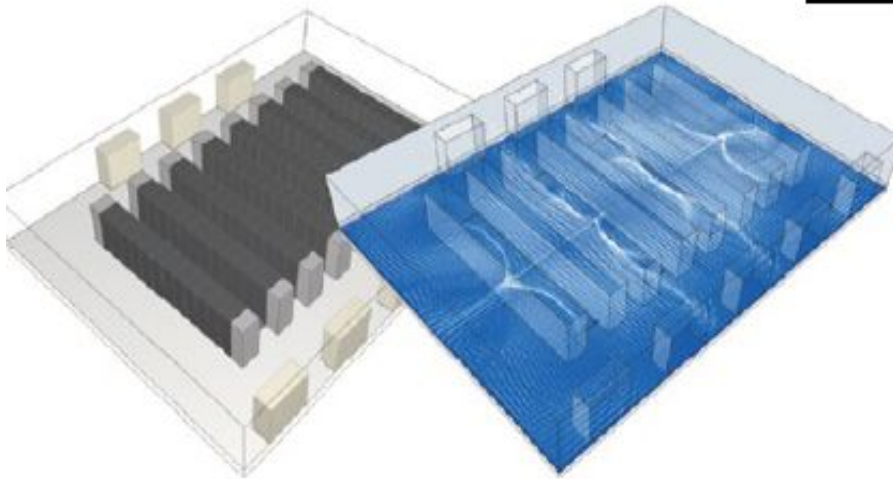
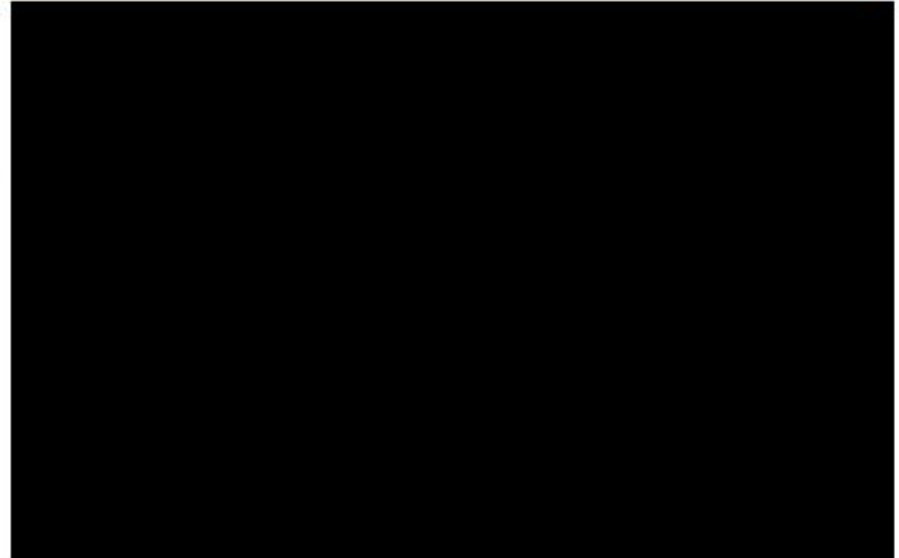




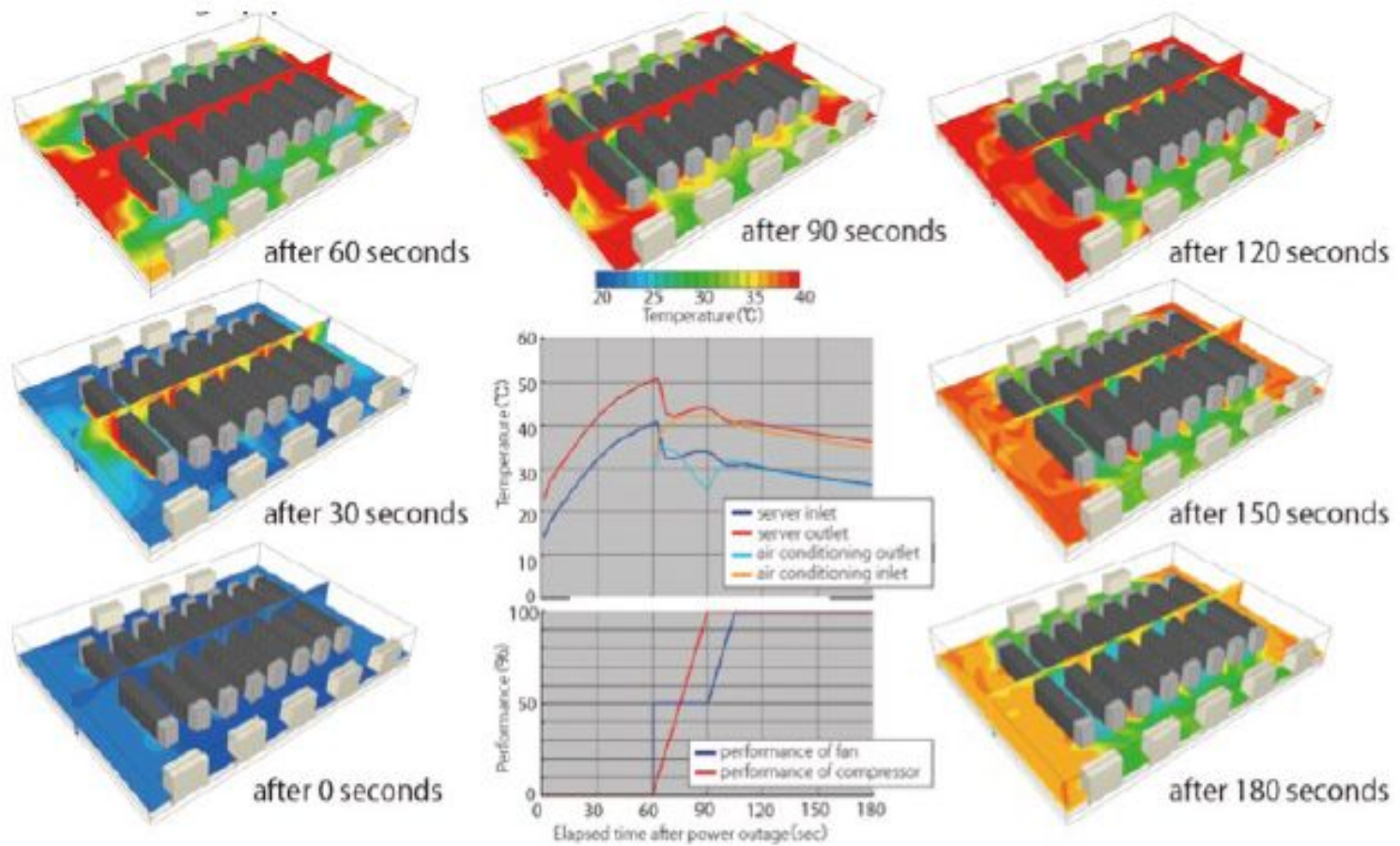
# Air flow analysis on data center floor

---

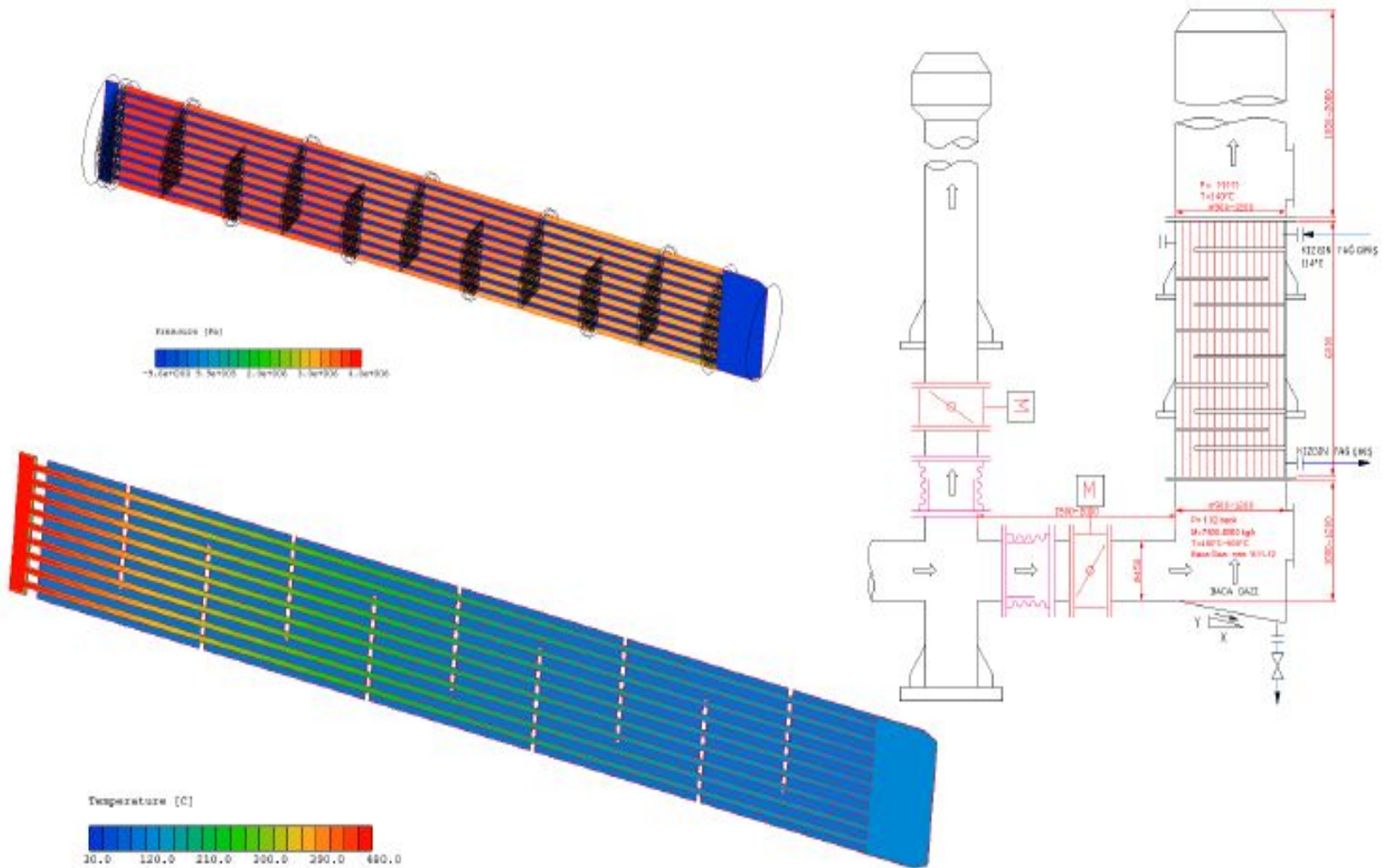
In order to avoid uneven flow volumes to flow stagnation and cooling corridors, the air flow in the room floor is inspected and designed.



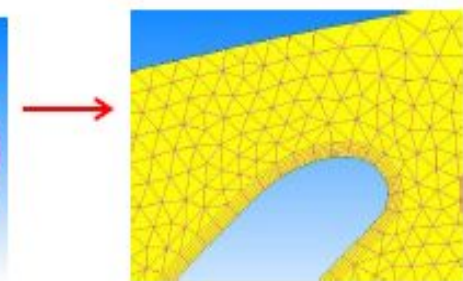
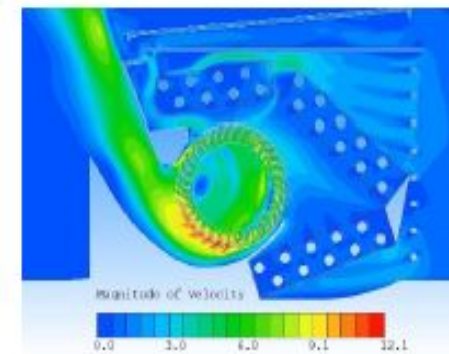
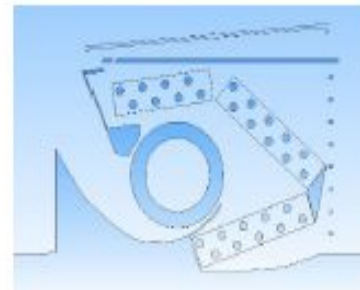
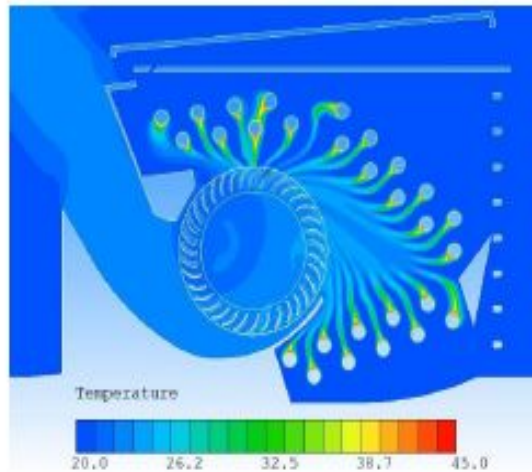
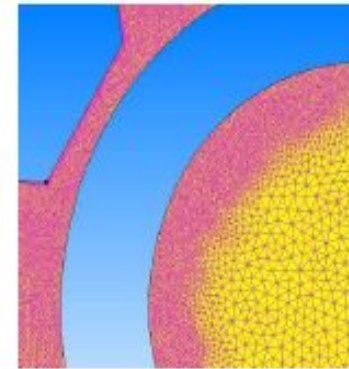
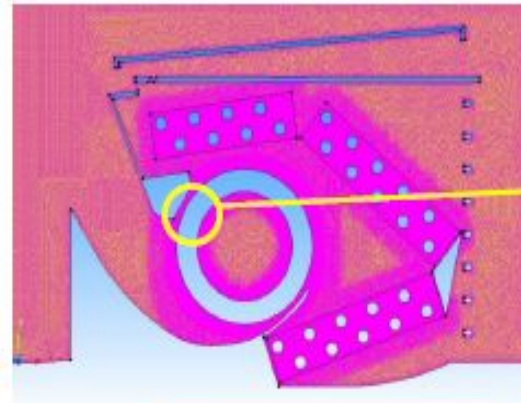
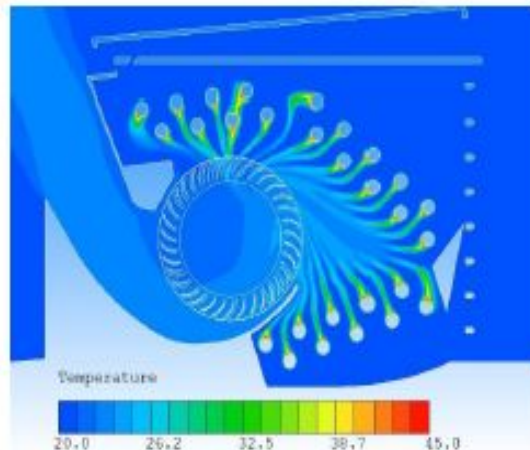
# Examination of system restart status



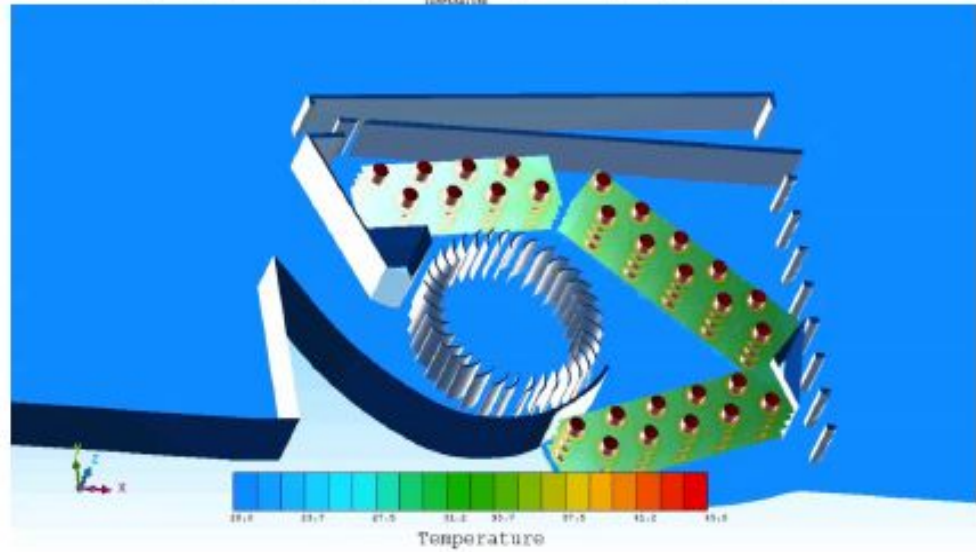
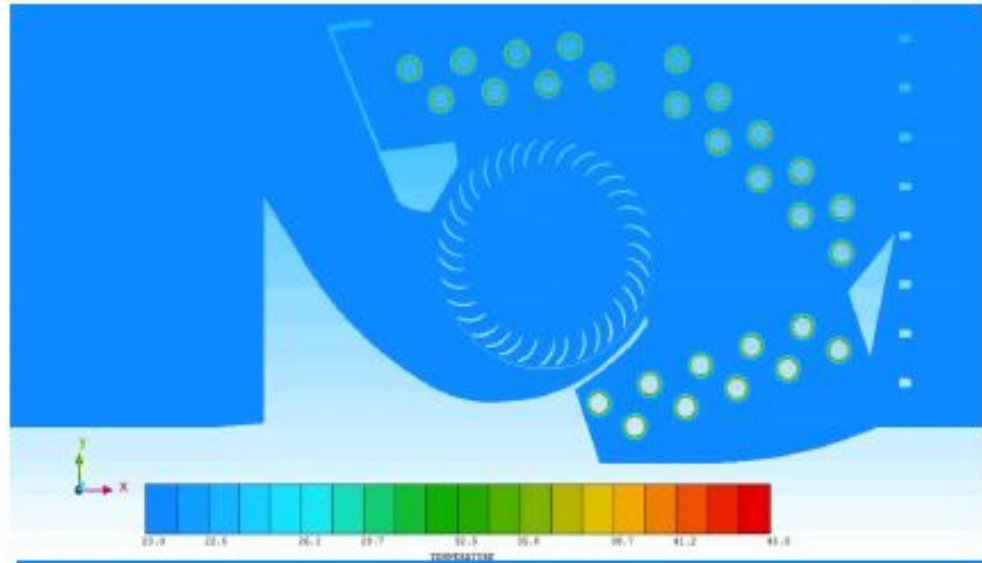
# Waste Heat Recovery System Performance Analysis



# Investigation of Axial Fan Performance in Air Conditioner

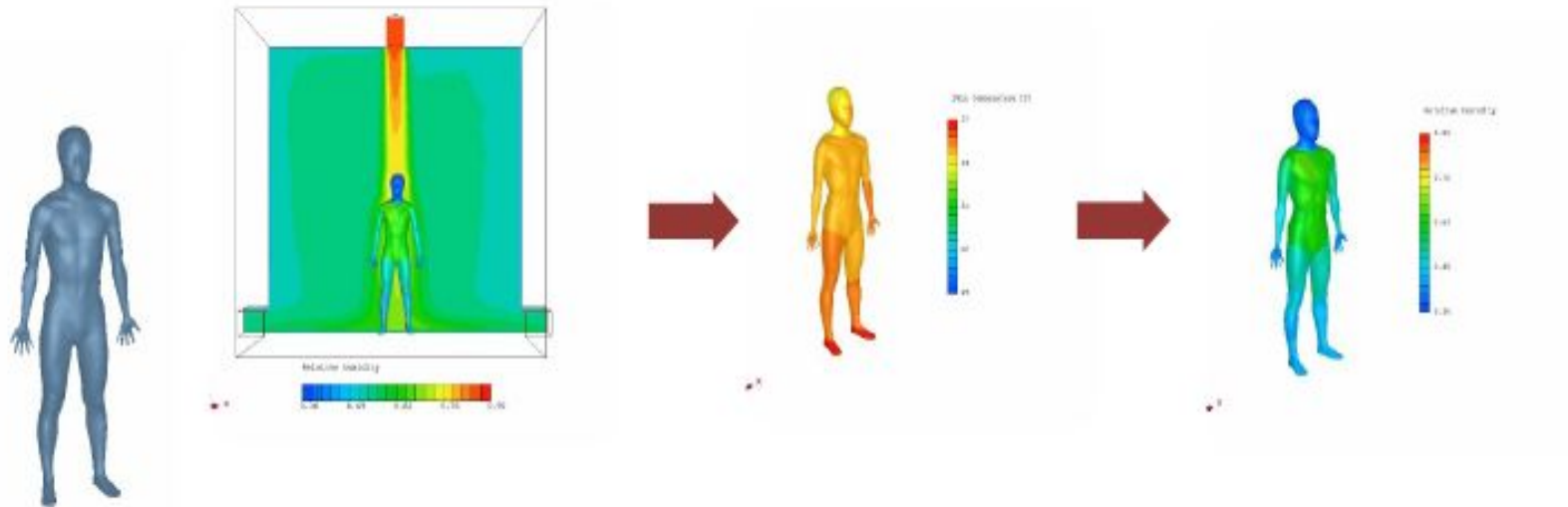


# Investigation of Axial Fan Performance in Air Conditioner



# Thermoregulation-Model JOS

---



# Thermoregulation-Model JOS

```

==== SENSIBLE AND LATENT HEAT FLUX AT SKIN ====
[NAME]      [DRY (W/M2)]  [DRY (COM)]      [EMAX]      [EMK]      [EMW]
--BODY1--
HEAD        21.10290    0.00000          97.27864    8.69753    3.04340
NECK        2.97529    0.00000          14.01634    1.65326    0.64412
CHEST       3.85753    0.00000          9.80848     7.04828    1.78213
BACK        4.65836    0.00000          10.50344    7.11521    6.89894
VELVET     4.69864    0.00000          10.82825    10.85324    10.83974
L.SHOULDER  1.91848    0.00000          4.90718     2.94747    2.82238
L.ARM       1.32443    0.00000          3.70544     1.62903    1.49648
L.HAND      3.91729    0.00000          36.86282    3.00193    0.86624
R.SHOULDER  1.93902    0.00000          4.84371     2.93274    2.81078
R.ARM       1.34884    0.00000          3.88796     1.62229    1.49043
R.HAND      4.18018    0.00000          36.87295    2.99837    0.86172
L.THIGH     7.13881    0.00000          17.37632    6.90794    4.11209
L.LEG       4.94838    0.00000          11.39175    2.64759    1.08948
L.FOOT      2.23480    0.00000          9.72396     1.98874    1.07989
R.THIGH     6.89419    0.00000          17.15889    6.91051    4.12468
R.LEG       4.31140    0.00000          11.23317    2.64962    1.09769
R.FOOT      2.28939    0.00000          9.75989    1.95696    1.07992
    
```

```

==== SKIN BLOOD FLOW RATE[L/H] ====
[NAME]      [UNCONTACT]  [CONTACT]
--BODY1--
HEAD        6.06797    0.00000
NECK        0.68755    0.00000
CHEST       2.09813    0.00000
BACK        2.61608    0.00000
VELVET     2.52378    0.00000
L.SHOULDER  0.96741    0.00000
L.ARM       0.56823    0.00000
L.HAND      1.39506    0.00000
R.SHOULDER  0.94806    0.00000
R.ARM       0.56217    0.00000
R.HAND      1.32237    0.00000
L.THIGH     2.40028    0.00000
L.LEG       0.87533    0.00000
L.FOOT      1.44553    0.00000
R.THIGH     2.60794    0.00000
R.LEG       0.80714    0.00000
R.FOOT      1.44339    0.00000
    
```

```

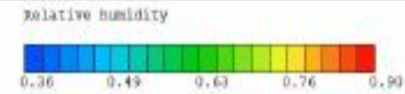
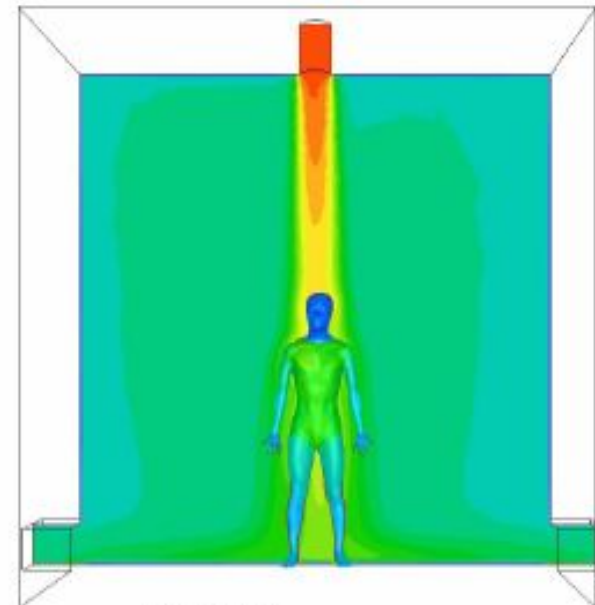
==== INDEX OF HUMAN BODY ====
--BODY1--
MEAN SKIN TEMPERATURE      = 35.069
SKIN WETNESS               = 0.230
LATENT HEAT LOSS[W/M^2]    = 45.258
MAXIMUM EVAPORATIVE HEAT LOSS[W/M^2] = 196.563
SENSIBLE AND LATENT HEAT LOSS[W/M^2] = 97.194
SKIN BLOOD FLOW RATE[L/H]  = 31.754
HEAT PRODUCTION BY SHIVERS[W/M^2]  = 0.000
METABOLISM[W]              = 159.987
    
```

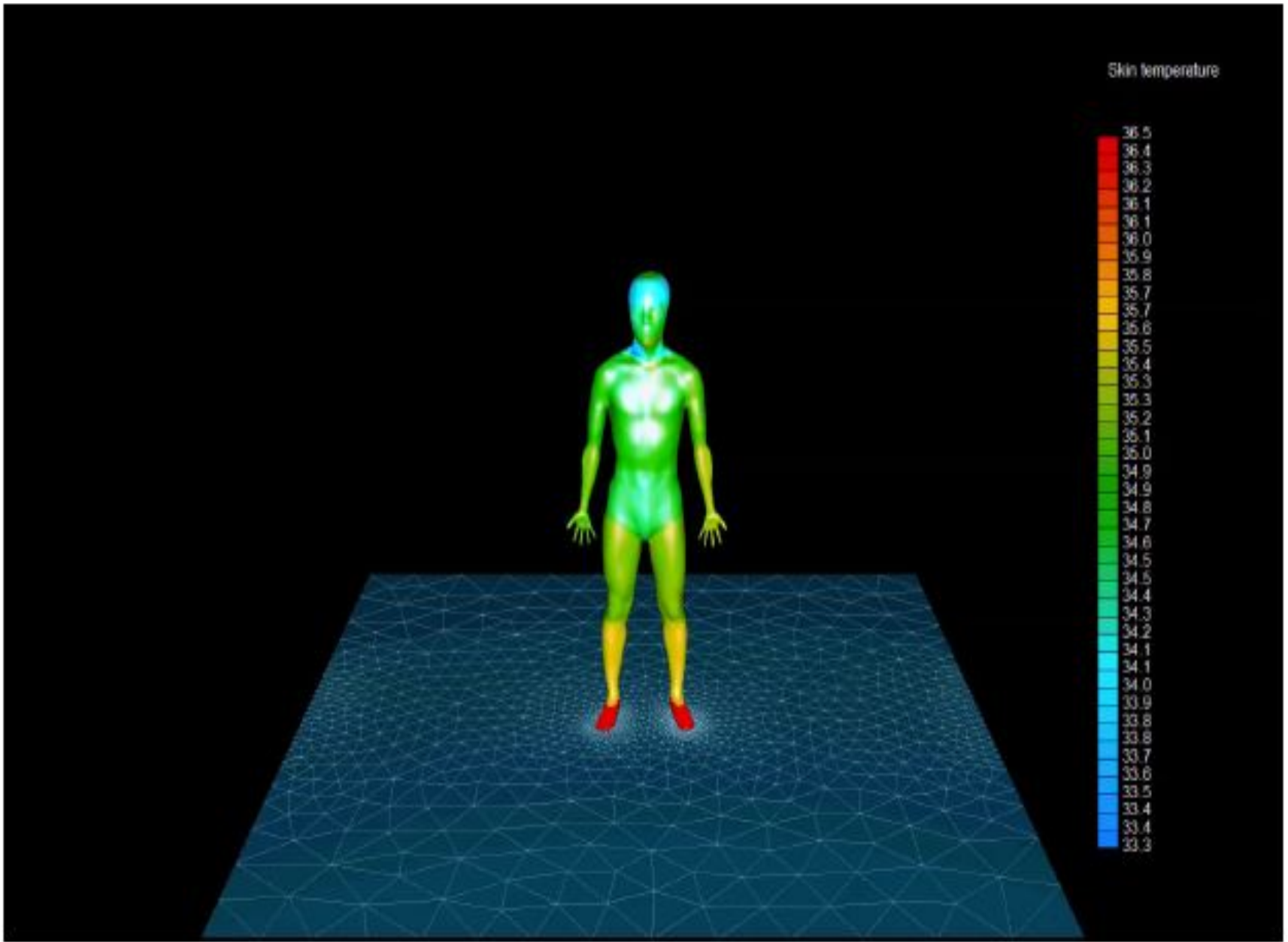
```

==== HEAT BALANCE OF SEGMENT ====
[NAME]      [SKIN(D)]  [SKIN(C)]  [CORE]  [ARTERY]  [VEIN]  [A-VEIN]
--BODY1--
HEAD        0.00022  0.00000  0.00006  -0.00011  0.00023  0.00000
NECK        -0.00024  0.00000  -0.00121  -0.00003  0.00003  0.00000
CHEST       0.00135  0.00000  -0.00666  -0.00009  -0.00018  0.00000
BACK        -0.00230  0.00000  -0.00859  -0.00011  -0.00000  0.00000
VELVET     0.00096  0.00000  -0.00386  -0.00019  -0.00006  0.00000
L.SHOULDER  -0.00227  0.00000  -0.00721  -0.00001  -0.00001  -0.00007
L.ARM       -0.00262  0.00000  -0.00750  -0.00001  -0.00018  0.00074
L.HAND      0.00130  0.00000  -0.00122  -0.00000  -0.00004  -0.00153
R.SHOULDER  -0.00223  0.00000  -0.00846  -0.00001  -0.00004  0.00004
R.ARM       0.00704  0.00000  -0.00018  -0.00000  -0.00005  -0.00086
R.HAND      -0.01310  0.00000  -0.00013  -0.00000  0.00010  0.01402
L.THIGH     -0.00441  0.00000  -0.00807  -0.00006  -0.00007  -0.00076
L.LEG       -0.00058  0.00000  -0.00222  -0.00002  -0.00001  -0.00012
L.FOOT      0.00036  0.00000  0.00045  0.00000  0.00006  0.00005
R.THIGH     0.00131  0.00000  0.00104  -0.00004  0.00006  0.00023
R.LEG       0.00002  0.00000  -0.00002  -0.00003  -0.00002  0.00000
R.FOOT      -0.00019  0.00000  -0.00034  -0.00003  -0.00003  -0.00003
    
```

```

==== SEGMENT TEMPERATURE ====
[NAME]      [SKIN(W)]  [SKIN(C)]  [CORE]  [ARTERY]  [VEIN]  [A-VEIN]
--BODY1--
HEAD        34.31789  0.00000  37.27256  37.16134  34.83064  ---
NECK        34.94738  0.00000  37.02043  37.16134  34.83206  ---
CHEST       34.80622  0.00000  37.29089  37.16134  37.18917  ---
BACK        34.75471  0.00000  37.38340  37.16154  37.29929  ---
VELVET     34.62129  0.00000  37.57903  37.16154  37.35519  ---
L.SHOULDER  35.02700  0.00000  37.40448  37.15606  34.66732  25.02559
L.ARM       35.24069  0.00000  37.25350  37.13879  34.41702  35.19537
L.HAND      35.29350  0.00000  34.49360  37.02323  35.87307  35.50008
R.SHOULDER  34.96780  0.00000  37.40357  37.19545  34.64970  34.97618
R.ARM       35.18237  0.00000  37.23955  37.13715  34.38331  35.19617
R.HAND      35.21746  0.00000  34.45614  37.04599  35.81921  35.43356
L.THIGH     35.18772  0.00000  37.09010  37.17808  37.35015  25.19661
L.LEG       35.45929  0.00000  37.93251  37.19900  37.33190  35.51373
L.FOOT      34.49562  0.00000  34.87628  37.10492  34.74200  34.55563
R.THIGH     35.23878  0.00000  37.90368  37.17816  37.98872  35.24773
R.LEG       35.31804  0.00000  37.33680  37.13938  37.93789  35.34872
R.FOOT      34.46649  0.00000  34.87974  37.10532  34.74294  34.56049
    
```

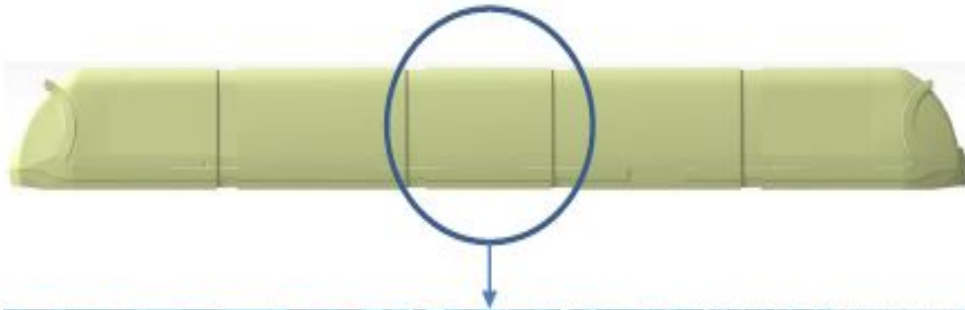






# Passenger Comfort

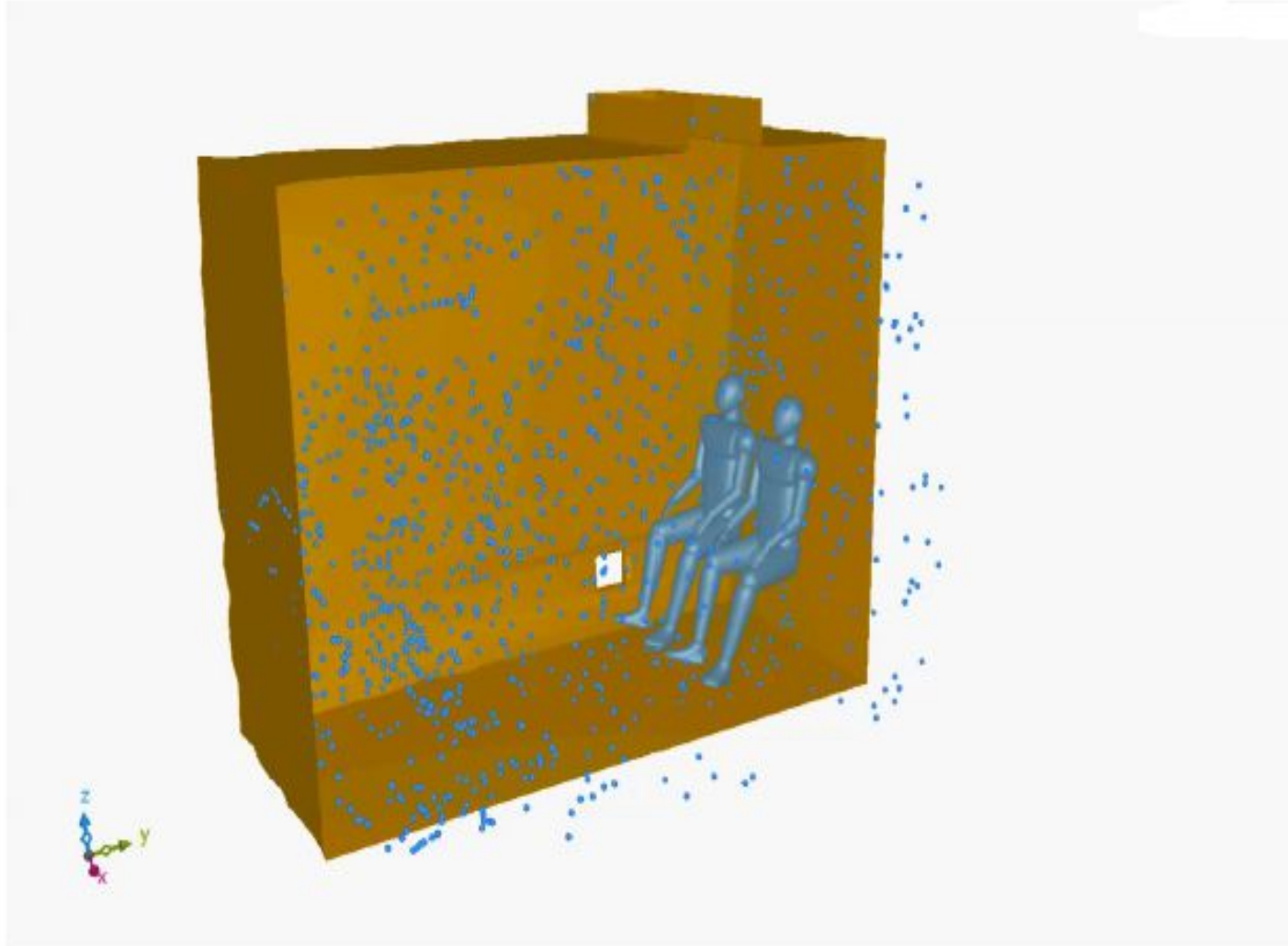
---





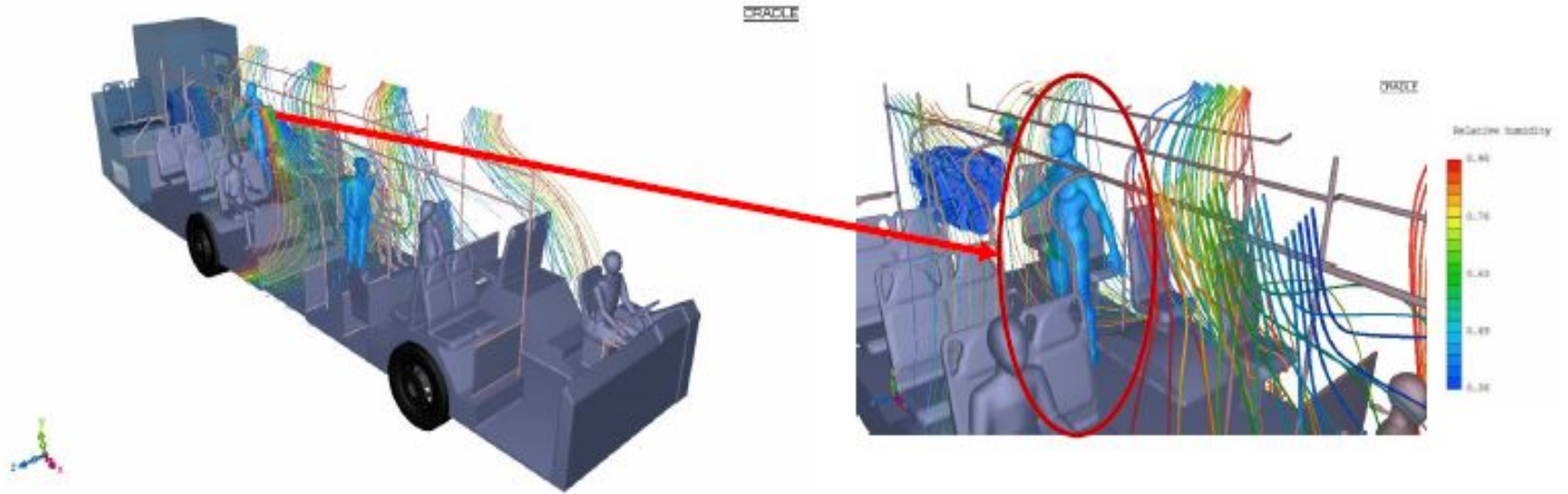
# Passenger Comfort

---

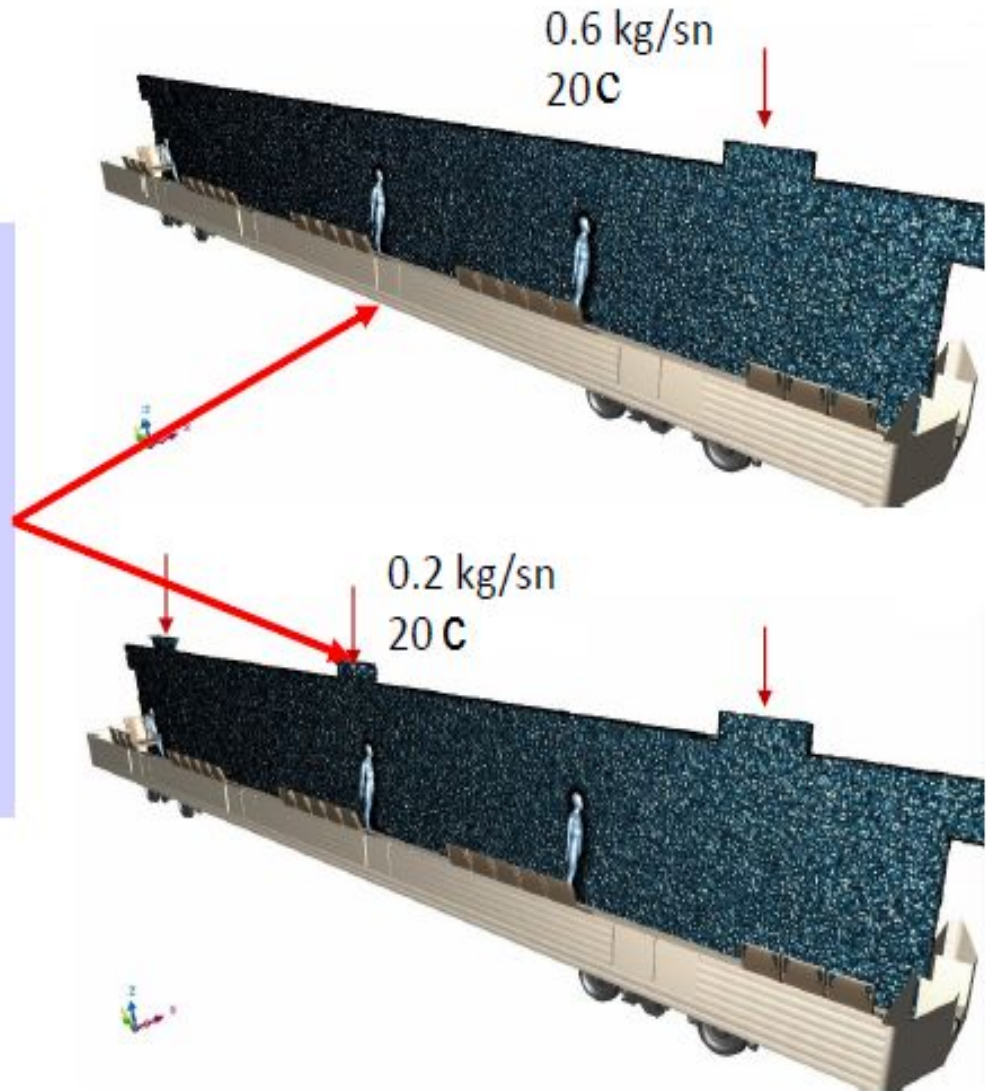


# Passenger Comfort

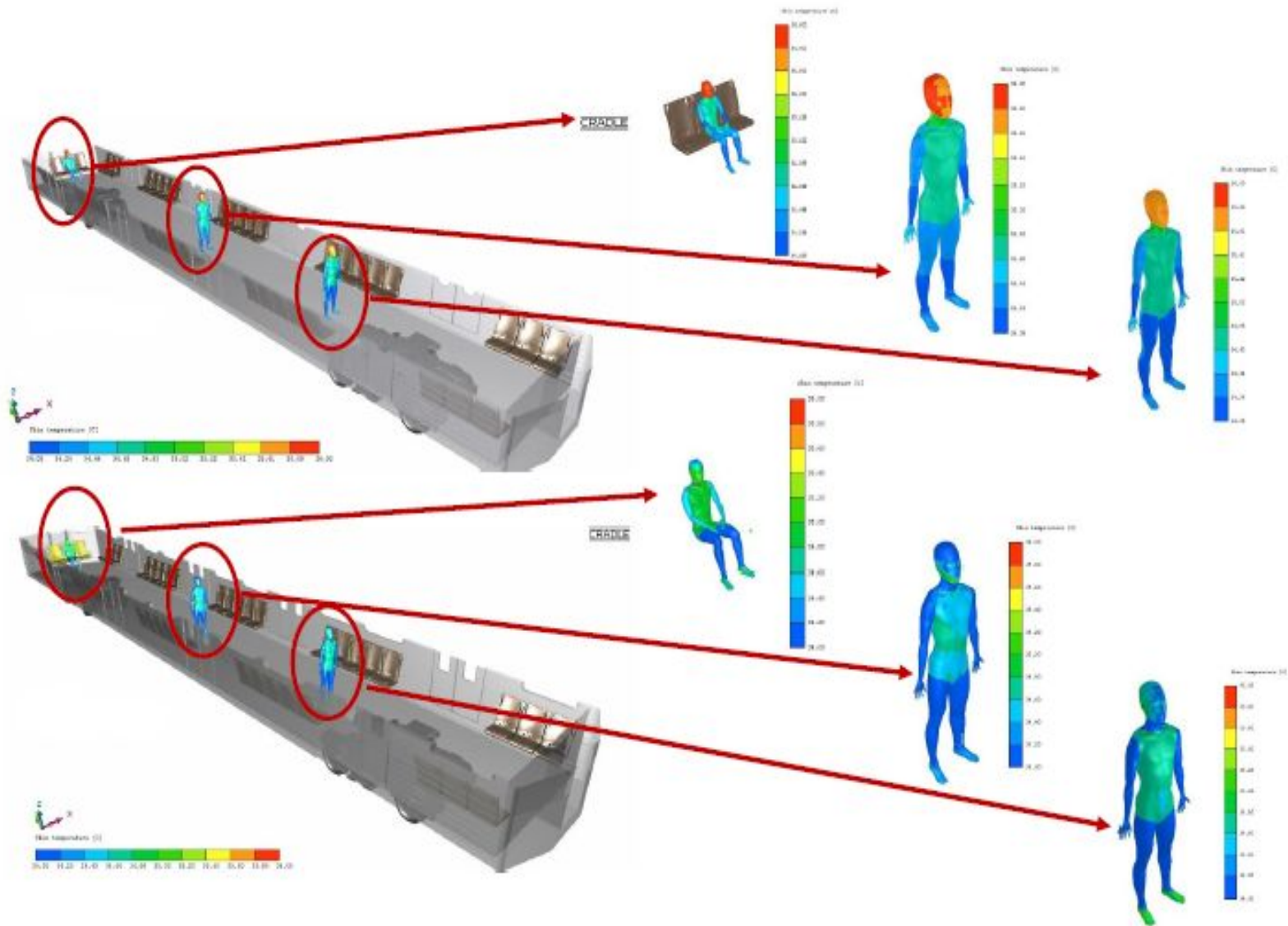
---



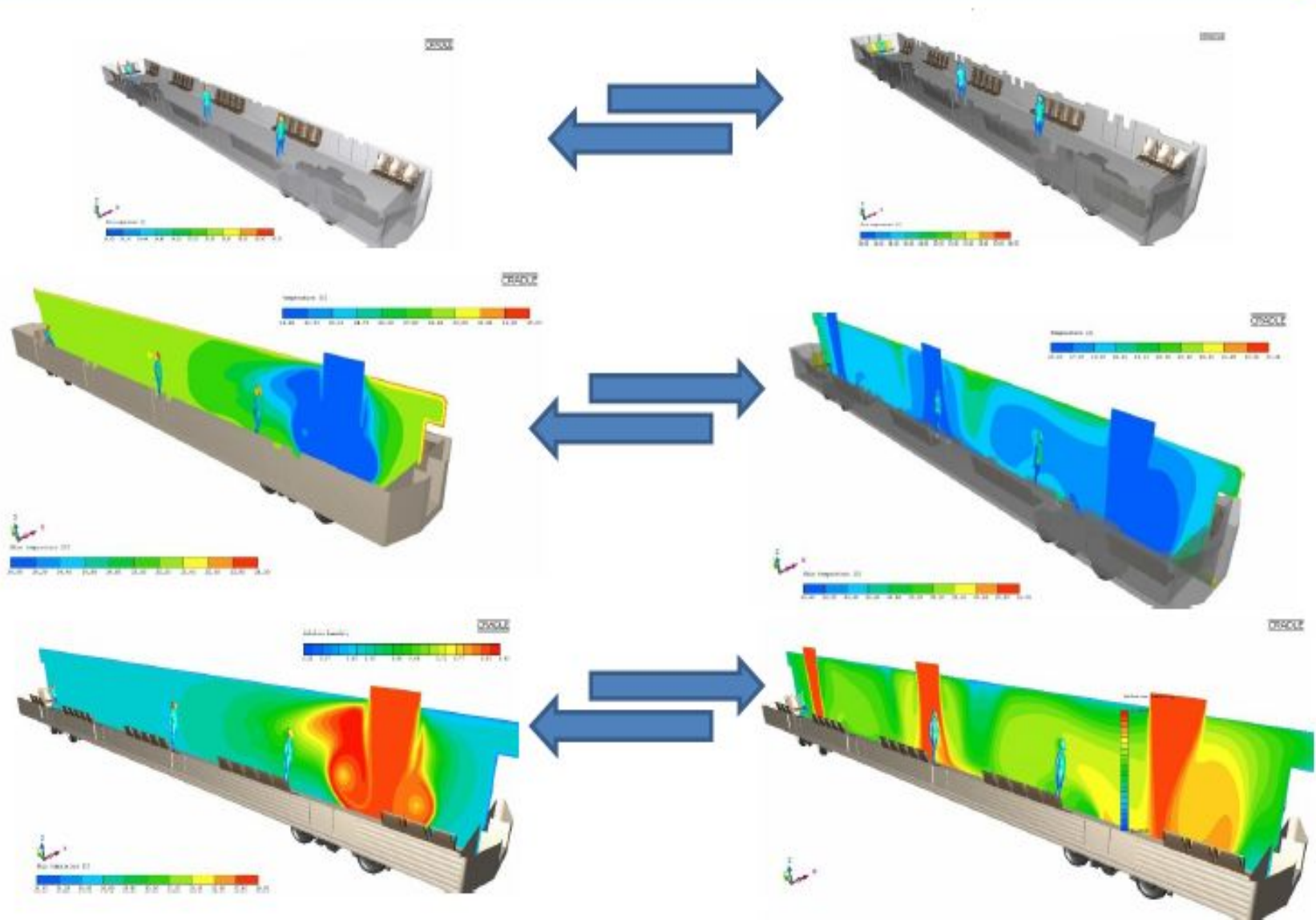
# Passenger Comfort



# Passenger Comfort

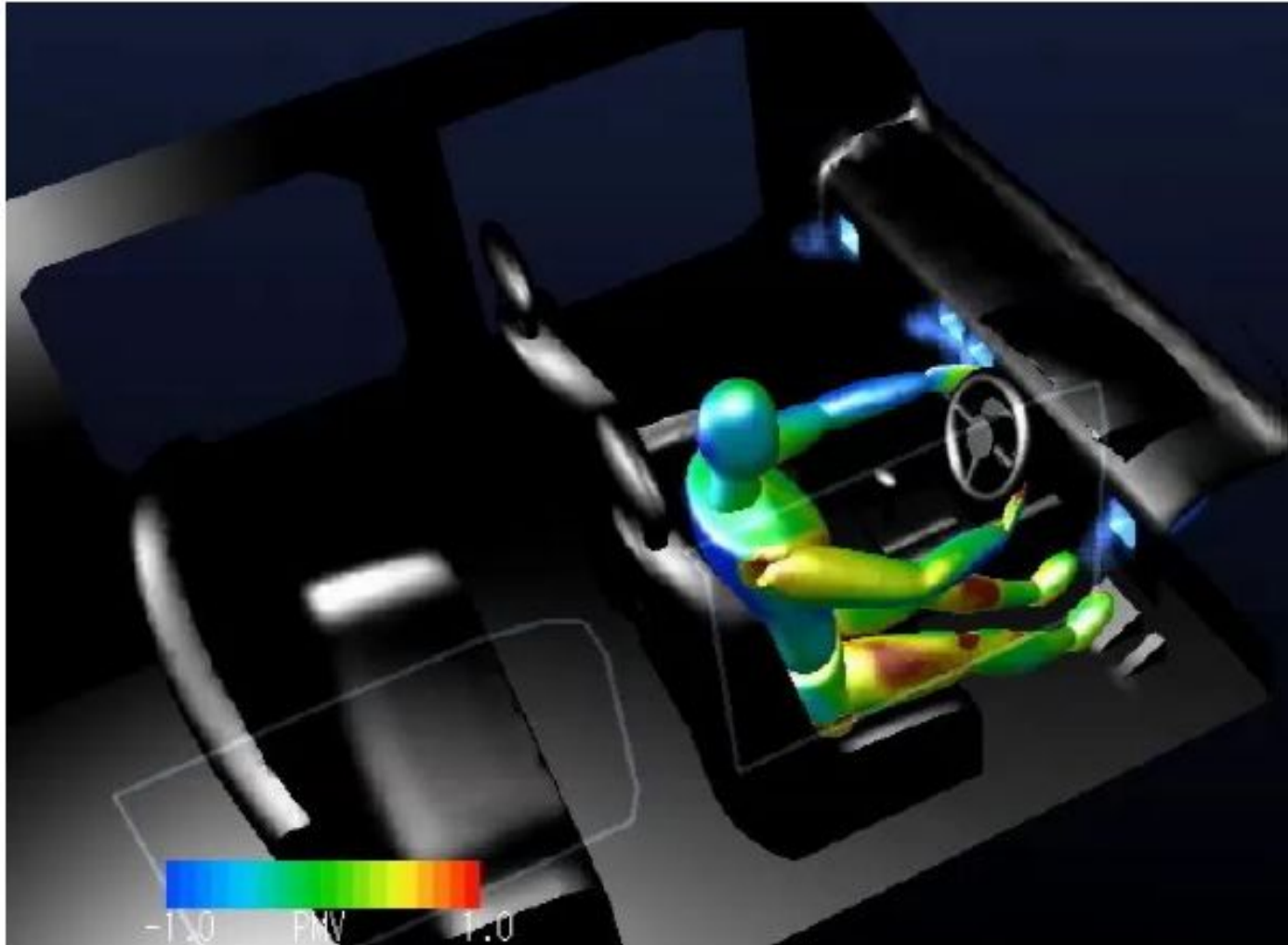


# Passenger Comfort



# Passenger Comfort

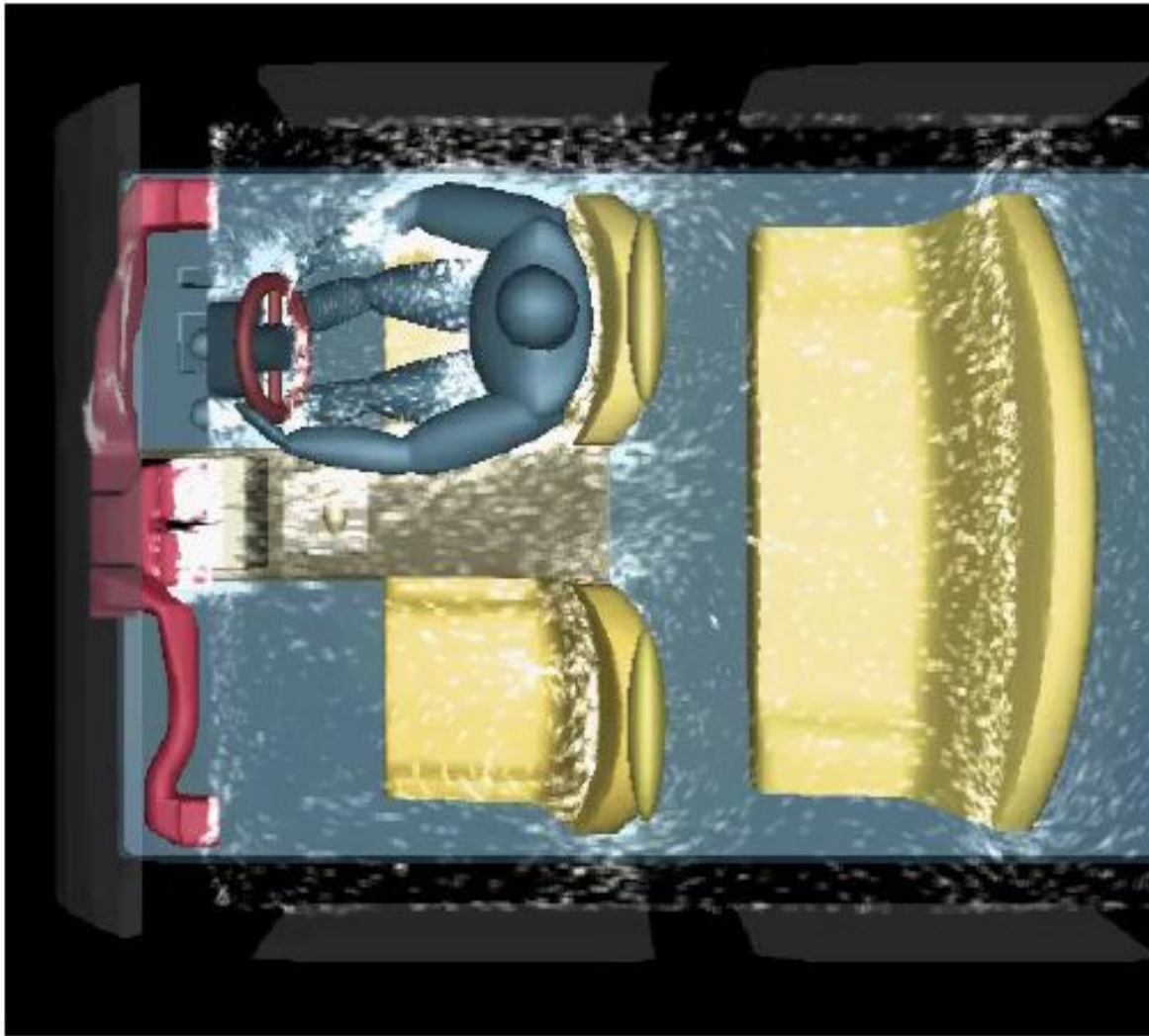
---





# Passenger Comfort

---



# Passenger Comfort

---

