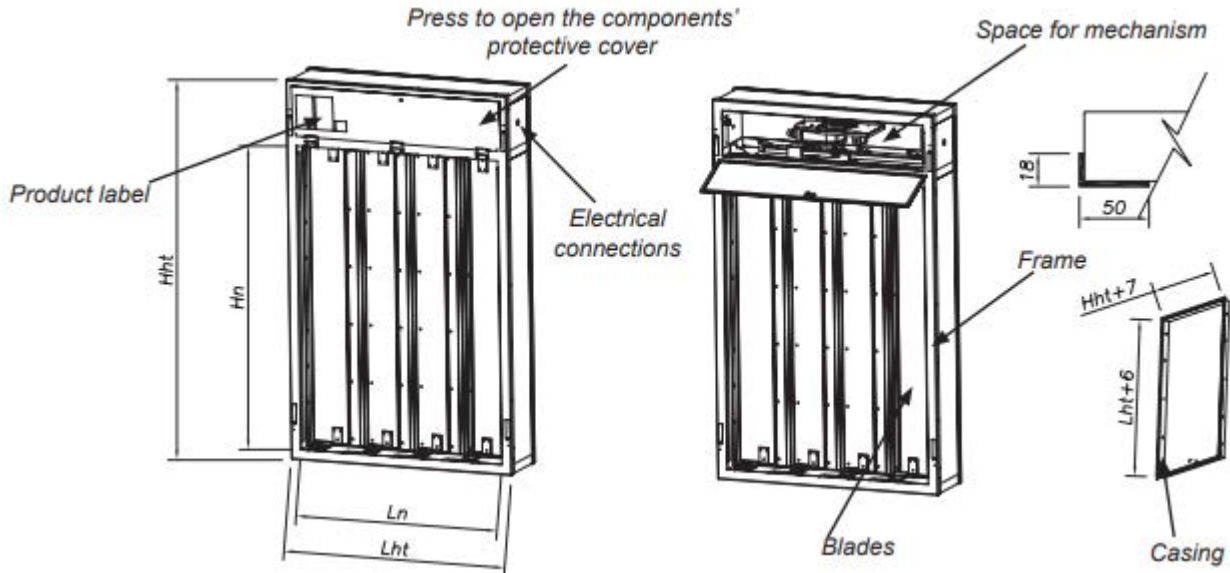




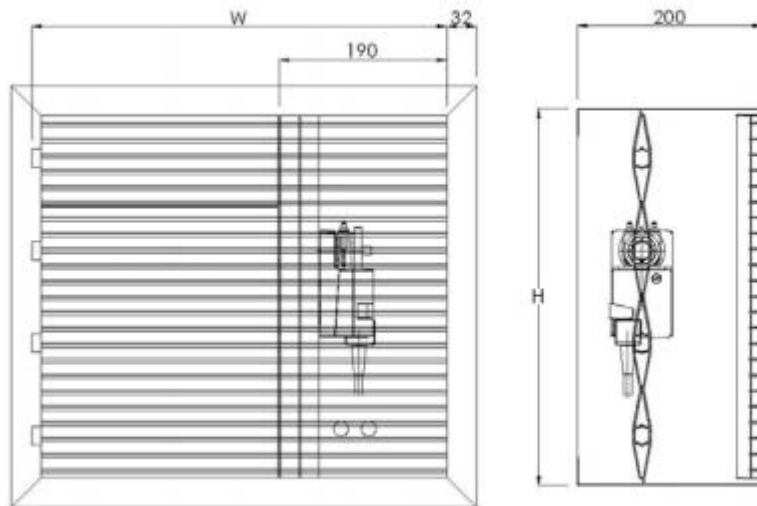
# MODEL SED

Project:
Tag:
Engineer:
Contractor:
Date:

## Smoke Evacuation Damper



L Dimensions (see drawing)		
Number of blades (N)	Nominal dimensions Ln (mm)	External dimensions Lht (mm)
2	354	418
3	527	591
4	700	764
H Dimensions		
Nominal dimensions Hn (mm)		
200 to 1000mm		



As part of our continuous improvement program, we reserve the right to make further improvements without notice.

Date submitted: